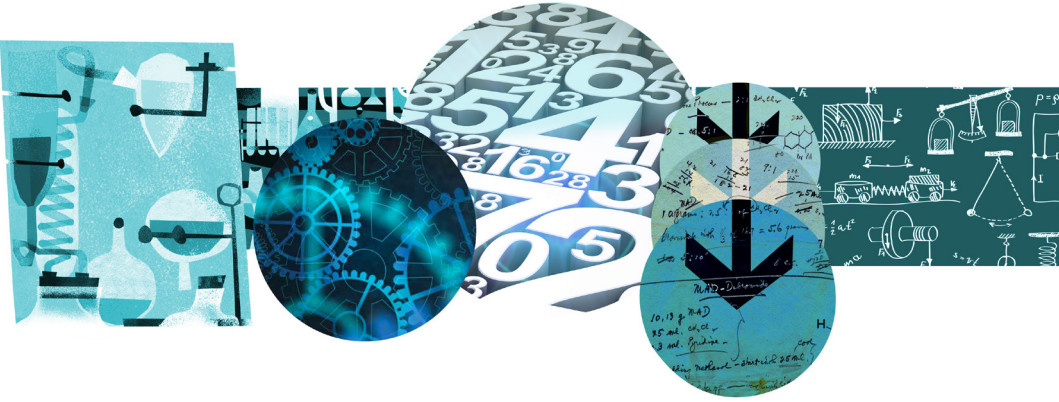




TÜBİTAK

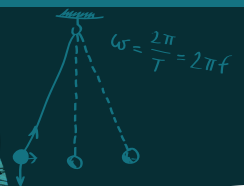
THE SCIENTIFIC AND TECHNOLOGICAL RESEARCH COUNCIL OF TURKEY



FRONTIER  
R&D LABORATORY  
SUPPORT PROGRAM



FRONTIER  
R&D LABORATORY  
SUPPORT PROGRAM





## A Program Designed for Leading R&D Firms

Are you a top-performing, R&D intense firm that has ambitions to expand the global base of R&D laboratories to take the company's competitive advantage to new frontiers? Then the "Frontier R&D Laboratory Support Program (1515)" is perfectly aligned with the amendable ambitions of your company!



**TUBITAK supports Leading R&D companies to establish R&D laboratories in Turkey.**



This innovative support program is designed especially to facilitate top performing, leading R&D intense companies to establish and/or expand their R&D laboratories in Turkey, primarily in areas of priority.

The merit of being an R&D intense firm is determined based on R&D intensity and net sales averaged over the last 3 years. Companies should have a 3-year average R&D intensity of at least 1% and net sales over 2 billion TRY.



**1515 offers a  
competitive  
advantage to new  
frontiers in Turkey.**



The program is conceived and implemented by The Scientific and Technological Research Council of Turkey (TUBITAK) – the leading agency for the management, funding, and conduct of R&D and innovation activities in Turkey.





## Long - Run R&D Laboratories

The 1515 Program applies an integrated perspective that extends beyond a consideration of the initial, establishment phase of the R&D laboratory. We realize that R&D laboratories flourish with long-term commitments. For this reason, the support of the 1515 Program extends to the phase of sustaining the activities of R&D laboratories in the long-run.

The 1515 Program offers an entirely grant-based financial model to cover up to 75% of the operating expenses of the R&D laboratory in Turkey with up to 10 million TRY for each calendar year for a duration of at most 10 years.



**10 Million TRY for each year  
for a duration of at most  
10 years.**



The coverage of the grant support consists of the following items:

- Personnel Costs
- General Operating Costs
- Consultancy Fees

For eligibility to have personnel costs covered in the total grant amount, at least 50% of the personnel must hold Turkish citizenship and at least 1/3 should have a doctoral degree.

## R&D Ecosystem

Prior to the grant support, TUBITAK can further provide the company with pre-application support to familiarize the company with the R&D capacities in the ecosystem of Turkey. Such a consultancy will allow the integration of the company with the ecosystem.



**TUBITAK's other over 50 support mechanisms are open for the application Of R&D laboratory in Turkey.**



The presence of the R&D laboratory in Turkey will further open the possibility of benefiting from any one of TUBITAK's other grant-based mechanisms, which are over 50 support mechanisms in total. These mechanisms, including call-based programs in areas of priority, are open for the application of all research entities in Turkey.

## How To Apply The Program

In order to benefit from the 1515 Program, all that your company needs to submit to TUBITAK is a "Letter of Intent" following by an application form. These documents should describe the qualities of the proposed R&D laboratory in being provided with grant based support for undertaking frontier R&D activities in Turkey.



**All that your company needs to submit to TUBITAK is a “Letter Of Intent” at first.**



The application form is available from the relevant TUBITAK website: <http://tubitak.gov.tr/en/1515> The application form consists of a basic set of questions that will be used to verify the qualifications of the company in carrying out cutting-edge scientific and technological research at the frontiers of discovery and innovation.

## Priority Areas In Turkey

The Supreme Council of Science and Technology, which is the highest decision-making body in Turkey and is chaired by the Prime Minister, specifies nine areas of priority.



**The primary focus of the 1515 program is in the priority areas.**



The areas of priority are the following:

- ICT
- Automotive
- Machinery and Manufacturing
- Energy
- Health
- Water
- Food
- Defense
- Space

While the primary focus of the 1515 Program is the priority areas, R&D laboratories that will conduct frontier R&D activities in other areas can be supported under the program based on the approval of the Science Board of TUBITAK.





## Expectations from R&D Laboratories

The program is designed to “facilitate” the process of allowing leading firms to undertake frontier R&D activities in their laboratories in Turkey. The basic expectations after a positive evaluation is that the R&D laboratory puts into place a research plan to realize the following:



**R&D laboratory puts into place a research plan to realize the expectations.**



- Expand the boundaries of existing scientific understanding;
- Bring new scientific understanding to natural phenomena;
- Conduct research activities that are directed to providing solutions to existing scientific challenges or those that are probabilistic in the future;
- Conduct research that have the potential to influence new, emerging technological trends;
- Perform basic and/or applied research for “proof of concept” activities and/or those that are directed to the establishment of new scientific frameworks.



# FRONTIER R&D LABORATORY SUPPORT PROGRAM



For further information and specific inquiries about the 1515 Program, please contact:

[www.tubitak.gov.tr/en/1515](http://www.tubitak.gov.tr/en/1515)

[1515@tubitak.gov.tr](mailto:1515@tubitak.gov.tr)





Tunus Caddesi No:80 06100 Kavaklıdere Ankara / TURKEY  
[www.tubitak.gov.tr](http://www.tubitak.gov.tr)